

# PORT VALE

Port Vale are sponsored by

**E.D.S.**

Overnight  
Parcel Services

*Today's Match is sponsored by*

**Arthur Burgess, Blackfriars Bakery, Newcastle, Staffs**



**Opener....Ally Brown beats Salmon to open the scoring against Stockport**

*Photo by courtesy of Neal Simpson.*



**SATURDAY, 9th FEBRUARY, 1985**

## PORT VALE

versus

## SWINDON TOWN

CANON LEAGUE DIVISION FOUR



**Chairman:**  
J. D. Lloyd

**Directors:**  
J. Burgess, D. McGrath,  
A. McPherson, W. T. Bell

**Manager:**  
John Rudge.

**Secretary:**  
P. A. Shaw

**Commercial Manager:**  
Mick Cullerton

**Address:**  
Vale Park, Hamil Road,  
Burslem, Stoke-on-Trent,  
ST6 10W

**Telephone Numbers:**  
Secretary's Office 0782 814134  
Lottery Dept 0782 85524  
Social Club 0782 88204

**Year Formed:** 1876

**Turned Professional:** 1885

**Limited Company:** 1911

**Football League Record:**

Division 2	—	1892-1896
Division 2	—	1898-1907
Division 2	—	1919-1926
Division 3 North	—	1929-1930
Division 2	—	1930-1936
Division 3 North	—	1936-1938
Division 8 South	—	1938-1952
Division 3 North	—	1952-1954
Division 2	—	1954-1957
Division 3 South	—	1957-1958
Division 4	—	1958-1959
Division 3	—	1959-1965
Division 4	—	1965-1970
Division 3	—	1970-1978
Division 4	—	1978-1983
Division 3	—	1983-1984
Division 4	—	1984-

**F.A. Cup:** Semi-finalists 1954

**Ground Capacity:** 35,000

**Record Attendance:**  
50,000 v Aston Villa, F.A. Cup,  
5th Round, 20th February, 1960

Programme written by Phil  
Sherwin, Steve Askey, John  
Hodkinson and Chris Rowson.

The views expressed in this  
publication are not necessarily  
those of Port Vale F.C.

# The Voice of the VALE



Today we would like to extend a warm welcome to the players, officials and supporters of our visitors from Swindon Town. The game gives us a chance of our first "double" of the season.

## FREIGHT ROVER TROPHY

Our second Round game away to Third Division Bristol City has been arranged for Monday, 18th March. Kick-off 7.45 p.m. No doubt it will be a very difficult encounter as they are on the fringe of the promotion race. Remember there are no replays in this competition and if the scores are level then extra time and if need be penalties will determine the winner.

## RE-ARRANGED FIXTURES

Our other three outstanding matches have been arranged as follows: Monday 1st April v. Tranmere (away), kick-off 7.30 p.m.; Wednesday, 17th April v. Northampton (away), kick-off 7.30 p.m.; Monday, 22nd April v. Blackpool (home), kick-off 7.30 p.m. This means that we have a midweek game every week from now until the end of April without allowing for progress in the Freight Rover Trophy.

## MANAGER OF THE MONTH

Congratulations must go to John Rudge, who was awarded the Bell's Whisky Divisional Manager of the Month award for February during which time we defeated Hereford, Northampton (FRT) and Stockport. Since the awards began in 1969 the Vale have only won it on two previous occasions; Gordon Lee in September, 1969 and John McGrath in February, 1983. (Both Division Four).

## STAFFS SENIOR CUP

In the Second Round of this competition we drew 2-2 away to Stoke City with goals from Eamon O'Keefe and Paul Sherwin. The replay here at Vale Park has yet to be arranged so see the press for details and come and support us against our local rivals.

## SUPPORTERS CLUBS QUIZ

In the quarter-finals of this season's National Competition we have been drawn at home to the holders, Leeds United and this will take place tomorrow night at the Huntsman in Burslem, starting around 7.30 p.m. Everyone is welcome so come along and cheer the lads on.

\*\*\*

## QUESTION TIME

Name the two Division Four sides who have scored six goals in a league game this season.

(Answer on page 16)

# JOHN RUDGE



**IT is nice to still remain unbeaten this year but disappointing that we still find ourselves in midtable.**

After we had beaten Exeter here on New Year's Day we were 13th in the table. Now, six games later, we are in 12th place which is little reward for a reasonably good run.

The problem is that we have not won as many games as we should have done. Of the seven matches played I feel we should have won them all barring the visit to Chesterfield this week when a draw was probably a fair result.

It was certainly not beyond us to have gained at least another six points which would have moved us up nicely and put us close to the promotion frame.

Football though is a curious game. When we have been scoring goals we have also been conceding them. At Peterborough and Chesterfield we kept two clean sheets in the space of four days against difficult opponents yet also failed to score ourselves.

The team's steady improvement this year was reflected in me being named Manager of the Month for February, when we only managed to squeeze in three games but won them all, including a Freight Rover triumph at Northampton.

The announcement took me by surprise because I had never given it a moment's thought but it is, I feel, a tribute to the players, coach Alan Oakes and also the supporters. If I win the award for March and April as well we might have a chance of going up!

The progress we have made is attributable to a number of factors. Billy Kellock's arrival and the form of Robbie Earle are but two. Robbie has been more unfortunate than most in being taken off the boil when he was steaming.

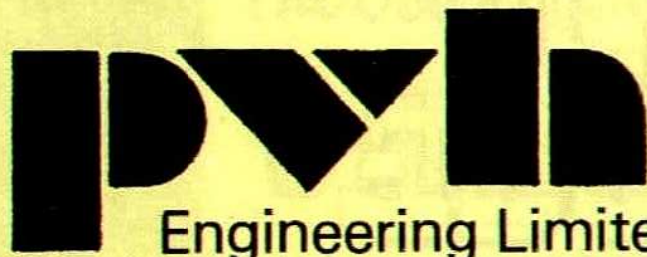
When a striker is scoring goals regularly as Robbie was doing with five goals in two games you cannot wait for the next match, but three weeks' enforced break due to the bad weather came at the worst possible time for him.

Barry Siddall moved on to Stoke City this week following his loan period at the Victoria Ground. Barry's departure eases the financial burden on the club and may give me greater scope to bring in new players for next season.

It also gives Chris Pearce the opportunity to establish himself as the No. 1 goalkeeper at the club. I will not be making any immediate moves to bring in another keeper until Chris has had the chance to maintain his standards.

He has shown a lot of improvement this season and I thought he had his best game at Chesterfield since Barry went on loan. It is now up to Chris to show me whether I need to sign a challenger for the green jersey or an understudy.

*John Rudge.*



The local experts with a national reputation for  
problem solving in

DUST CONTROL — FUME SCRUBBING  
VENTILATION — WARM AIR HEATING  
PROCESS DRYING — AIR CONDITIONING  
MATERIAL HANDLING — FABRICATION

**REDHILLS ROAD, MILTON, STOKE-ON-TRENT**

Tel. 0782 534235

Telex 36250 Cham Com

**W. T. BELL**  
**(BURSLEM) LTD.**



*Your Local  
British Leyland Dealer*

**Sandbach Road, Cobridge  
Stoke-on-Trent**

Tel.: Stoke-on-Trent 85900

J. LLOYD & SONS  
**SILENCER  
SERVICE**  
LTD.

**CAR EXHAUST  
SYSTEMS**

•  
*ALL MAKES OF CARS  
SUPPLIERS TO THE TRADE*

SPECIAL DISCOUNTS  
**REGISTRY STREET  
STOKE-ON-TRENT**

**Phone 0782 44395/48081**

# AWAY DAY to... MANSFIELD TOWN

WEDNESDAY, 13th MARCH, 1985. Kick-off 7.30 p.m.

Vale's visits to Field Mill in recent years have tended to produce controversial goals. Probably the most unusual being Mark Chamberlain's effort in February 1982 when he sneaked up behind Mansfield keeper Rod Arnold as he was rolling the ball out, and cheekily stroaked it into the net.

Town started life in 1894 as Mansfield Wesleyans and played at Newgate Lane until the local railway company purchased the ground. After a temporary stay at the strangely named "Priarie Ground" the club found a permanent home at Field Mill in 1905. The decision to purchase this site has proved to be a wise one, especially by today's standards. Field Mill occupies over nine acres of prime land near the town centre and is ripe for further development.

After fairly modest beginnings the "stags" burst on to the footballing scene in January 1929 when they travelled to Molineux and defeated the mighty Wolves by a goal to nil. Two years later Mansfield were able to use their newly won giant killing reputation to achieve the ambition of league membership. Initially the spectator and player facilities were poor by league standards, with only one stand, on the West side of the ground and teams having to change in the nearby "Bulls Head" inn. Just before the second World War, however, Town constructed an 1100 seater stand along the Bishop Street side of the ground, which is still in use today. The most important development, though, did not take place until 1959 when the club purchased a complete steel framed stand from a race course in south London and erected it behind the original west stand. This imposing structure incorporates the club office, dressing rooms and social facilities.

One of the more unusual uses that Field Mill has been put to in past years has been greyhound racing which took place during the 1930's, and explains the curved frontage at the Quarry Lane end of the ground, which currently accommodates away fans.

## JOURNEY BY ROAD

Take the A52 to Ashbourne and then follow the A517 to the Belper Junction with the A6. Follow the A6 to Ambergate before joining the A610 which takes you to Ripley. From here take the A61 towards Alfreton and then the A615 to Mansfield.

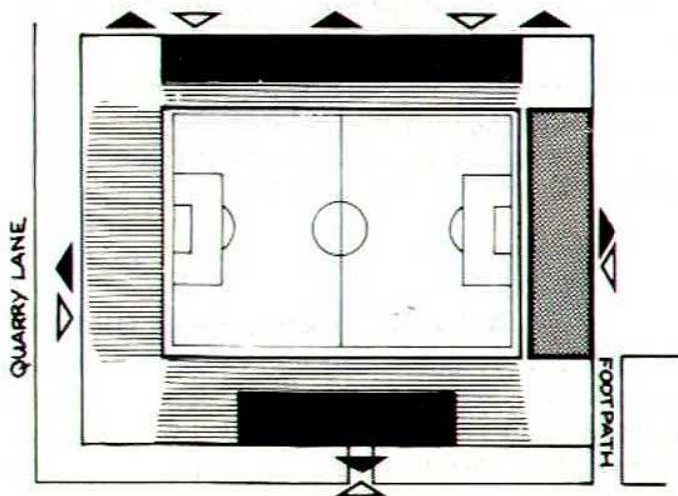
## MATCH DAY INFORMATION

Admission to the terraced sections of Field Mill this season costs £2.00 or £1.00 for children and Old Age Pensioners. Those fans wishing to sit down can do so in the West stand for £3.20 or in the Bishop Street stand for £2.60. No reductions are available for children and Old Age Pensioners.

Match Day Programmes cost 40p and Vale fans travelling by car will find spacious parking facilities behind the west Stand at a cost of 50p.

As in previous years, Vale fans are asked to stand at the open Quarry Lane end of the ground.

Leek & District will be running their usual coach to the game, costing approximately £4 per person and departing Vale Park at 5.00 p.m.



## CHAIRMAN'S MESSAGE

I have been overwhelmed with the amount of phone calls and letters I have received congratulating me on the result of the unfortunate Court Case we were involved in. This is now fully cleared and I can only thank all who have contacted me personally and to all Vale fans who have been very understanding and patient.

Your support over the last two years has been a great help and I am most personally grateful, as are my Board of Directors and staff.

Most sincerely,

J. D. LLOYD.

\*\*\*\*\*

## LOOKING BACK.....

## v. SWINDON TOWN

Vale have an excellent home record against Swindon, in fact, the 'Robins' have never won here at Vale Park, their only away win over us coming at the 'Old Rec' in our last season there, 1949-50. The game was played on Easter Saturday, 8th April and Town won 1-0. The Vale team was:- King, Hamlett, Butler, McGarry, Cheadle, Hallam, Askey, Polk, Pinchbeck, Griffiths, Mulligan.

Vale fans no doubt went home rather happier on the last day of the 1959-60 season, although we were only mid-table in Division 3, as we beat Swindon 6-1. Harry Oscroft, signed from Stoke City the previous September, scored four goals for us that day, a feat which has not been achieved by a Vale player since.

Oscroft again scored the following season in a 4-1 home win over the men from Wiltshire. This time it was Bert Llewellyn's turn to score a hat-trick, in a match which provided Vale with a little revenge after a 6-0 drubbing at the County Ground.

This season's 1-0 win at Swindon, courtesy of an Eamon O'Keefe header, was our first there since a memorable 3-2 triumph in 1962-63, when Town were promoted to Division 2. Vale, who eventually crept up to within four points of promotion themselves, lined up as follows:- Hancock, Lowe, Sproson, Poole, Nicholson, Miles, Rowland, Steele, Ford, Edwards, Grainger. John Rowland and Stan Steele were the Vale scorers, together with an own goal.

We were again in the running for promotion to Division 2 at the end of the 1974-75 season, but a win at the County Ground was a must if the target was to be achieved. 3-0 down at half-time Vale threw everything at Swindon in the second half but, despite goals from David Harris and Ray Williams, went down 3-2.

●

### RESULTS AT VALE PARK OVER THE LAST TWENTY YEARS

Saturday, 24th August, 1974	2-2	Williams, Sharp	3,446
Saturday, 20th September, 1975	3-0	Bailey 2, Cullerton	3,720
Saturday, 22nd January, 1977	2-2	Beech, Ridley	4,446
Saturday, 11th March, 1978	1-0	N. Chamberlain	3,723
Saturday, 15th January, 1983	3-0	Newton 2, Moss	6,397

# F. G. Chambers & Co. Ltd.

*Extensive Stocks of —*

**IMPORTED SOFTWOOD AND HARDWOODS  
FOR HIGH CLASS JOINERY  
OR GENERAL BUILDING AND CASE TIMBERS**

*Also —*

**PLYWOOD — BLOCKBOARD — CHIPBOARD  
HARDBOARD — ETC.**

*Distributors of —*

**Perstorp, Warerite and Formica  
Laminates**

*Please write or call at our new modern premises —*

**North Street, Stoke-on-Trent, Staffs.**

Telephone: 0782-45133 (7 lines)

## **Washington & Riley Ltd.**

**1 Wm. Clowes Street, Burslem**  
*CALOR GAS STOCKIST*

Tubes in Copper, Steel and Plastic  
also Fittings for above  
Plastic Spouting

All leading makes of tools and household  
goods

*For Personal Service Telephone 84363*

**NO PARKING PROBLEMS —  
OWN CAR PARK**

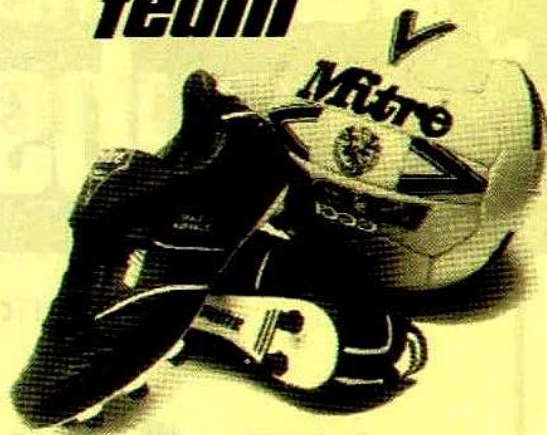
## **Event & Leisure**

**MR. BAYLISS**  
0865 244576

Caters to Port Vale and many other  
professional football clubs.

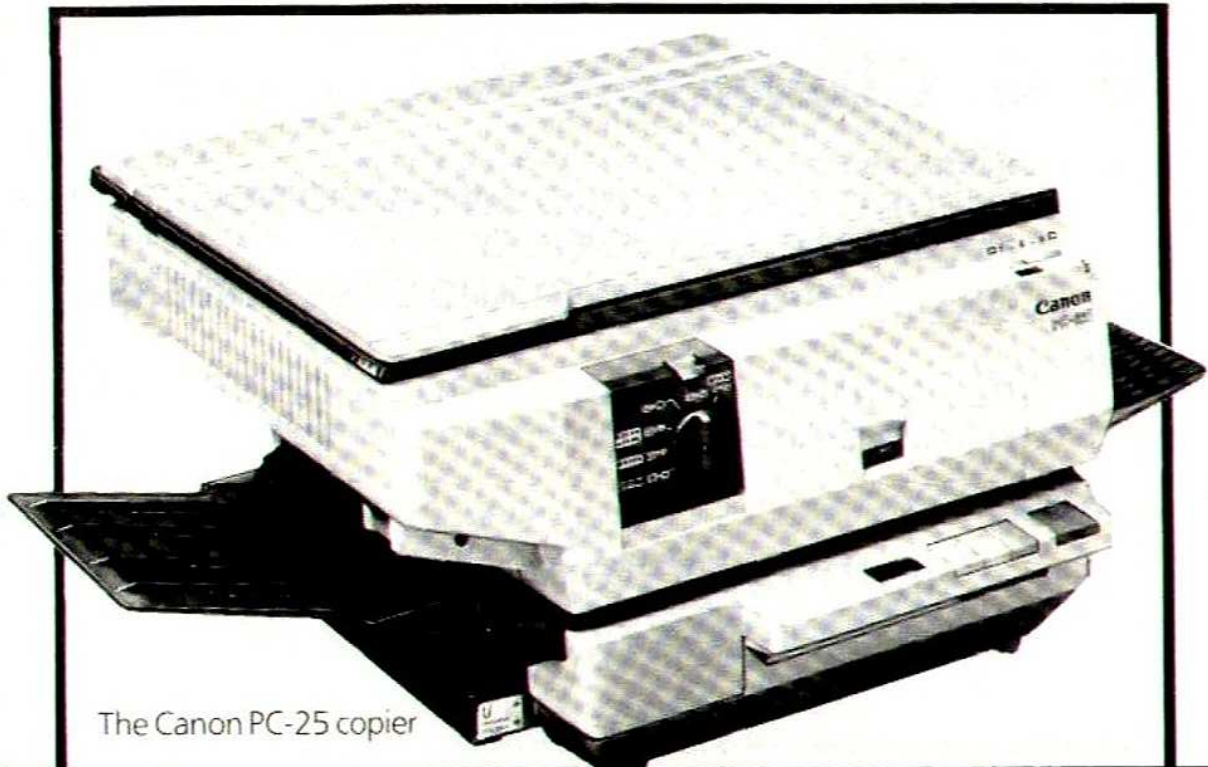
**60 CHERWELL DRIVE  
OLD MARSTON  
OXFORD**

***your winning  
team***



**mitre<sup>®</sup>**

Mitre Sports, Bayhall Works, Birkby, Huddersfield, Yorks. UK  
Tel 0484 37488 Telex 517470



The Canon PC-25 copier

**So reliable  
you'll never need  
a substitute.**

Canon

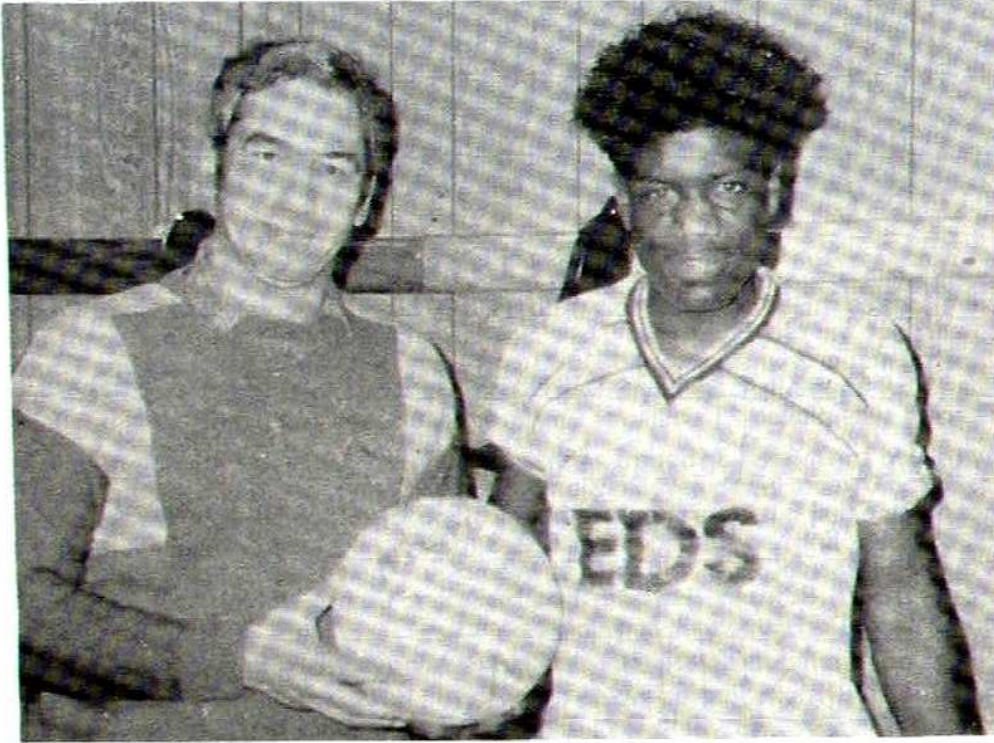


**Canon**  
**Personal Copiers**  
**We'll help you look good on paper.**

MANUFACTURERS OF COPIERS, CAMERA, ELECTRONIC TYPEWRITERS, CALCULATORS, COMPUTERS, FACSIMILE AND MICROFILM EQUIPMENT



# COMMERCIAL PAGE



ROBBIE EARLE being presented by ALAN WHITBY, Managing Director of E.D.S. who sponsored the match ball for the Hereford game.



## The Vale Lottery & Europrint Games What a Great Team



Lottery Office  
Vale Park  
Tel.: 85524

BLACKBURN  
Tel.: 0254  
679126

●  
*Why not support them both*

AND SIGN FOR THEIR TEAM

●

I am over 16 years of age and would like details without obligation

Name .....

Address .....

.....

Telephone: Daytime ..... Evening .....

# At VALE PARK

## HISTORY

Swindon were formed in 1881 but had to wait until 1920 before being elected to the Football League upon the formation of the old Division 3. Their Southern League days were not spent in anonymity though and their championship season of 1910-11 was rewarded with a game against Football League Champions Man. Utd. for the F.A. Charity Shield, a game won by the latter 8-4. A Swindon player of that era, Harold Fleming was picked 11 times for England, an unusual distinction for a non-league player.

In 1921 they moved to Division 3 (South) and remained in this Division throughout its existence until 1958 before spending 5 years in the new Division 3. In 1962-63 they finished as runners-up (Pipping the Vale for promotion by 4 pts) but were relegated back in 1965. The 1968-69 season was undoubtedly their most successful as they finished runners-up in Div. 3 (missing the title on goal average) and won the League Cup, beating Arsenal 3-1 in the final at Wembley. Their historic team was; Downsborough, Thomas, Trollope, Butler, Burrows, Harland, Heath, Smart, Smith, Noble, Rogers, Sub. Penman for Noble. The scorers were Don Rogers (2) and Roger Smart.

Unfortunately teams from outside the First Division were not allowed in Europe in those days so they entered the Anglo-Italian Trophy instead which they won in 1970, also the year in which they finished in their highest ever league position, 5th in Div. 2. In 1974 they were relegated to Div. 3 and in 1982 they slipped into Division 4 for the first time and have remained there ever since finishing in 17th position last season.

In the F.A. Cup they have reached the semi-finals on two occasions, in 1910 and 1912. Their former player John Trollope, who also went on to manage the club, holds the Football League record for the most number of league appearances for one club - 770.

Two of Swindons more recent managers were involved with the Vale during the 1970's - Bobby Smith (Manager) and Ken Beamish (player).

## This Season

At the moment Swindon are in 11th place after a run of seven consecutive home wins but their away form has tended to let them down, as they haven't won on foreign soil since November 3rd.

Their manager is ex-Celtic and Man. U. star **LOU MACARI** who took over during the last close season after being freed from Old Trafford. He still plays a defensive role when the need arises.

In goal is **SCOTT ENDERSBY** who was signed from Tranmere in 1983. In 1977 he was playing for Kettering and still holds the record for the youngest player ever to appear in the F.A. Cup (Proper) when aged 15 years and 9 mths. in a tie against Tilbury.

The back four is chosen from **NIGEL GRAY** signed from Orient in July 1983 where he made over 250 apps. and also had loan spells with Charlton and Brentford, **DAVID COLE** recently signed on a free transfer from Swansea, **CHARLIE HENRY** who made his debut in 1980 and has since passed 150 apps. **COLIN BAILIE**, a Belfast born youngster who has been at the County Ground since 1982. **MIKE GRAHAM** signed from Bolton in 1981 and **KEVIN BADDELEY** signed from Bristol C. also in 1981. The last two were both freed last season but re-signed in August 1984.

In midfield they have **LEIGH BARNARD** signed from Portsmouth in July 1982, **PAUL BATTY** a former apprentice who has made over 100 appearances since his debut in 1982 and **DAVE HOCKADAY** signed in 1983 from Blackpool where he had spent eight seasons.

Their forwards include **ANDY ROWLAND** the ex-Bury player who can also play centre-half, **PETER COYNE** the former Man. U. and Crewe striker who was signed last year from Hyde U., **GARY NELSON** signed from Southend in 1983. **COLIN GORDON** signed this season from West Midlands side Oldbury United and **DAVE CALDWELL**, who is currently on loan from Mansfield where

# SWINDON TOWN



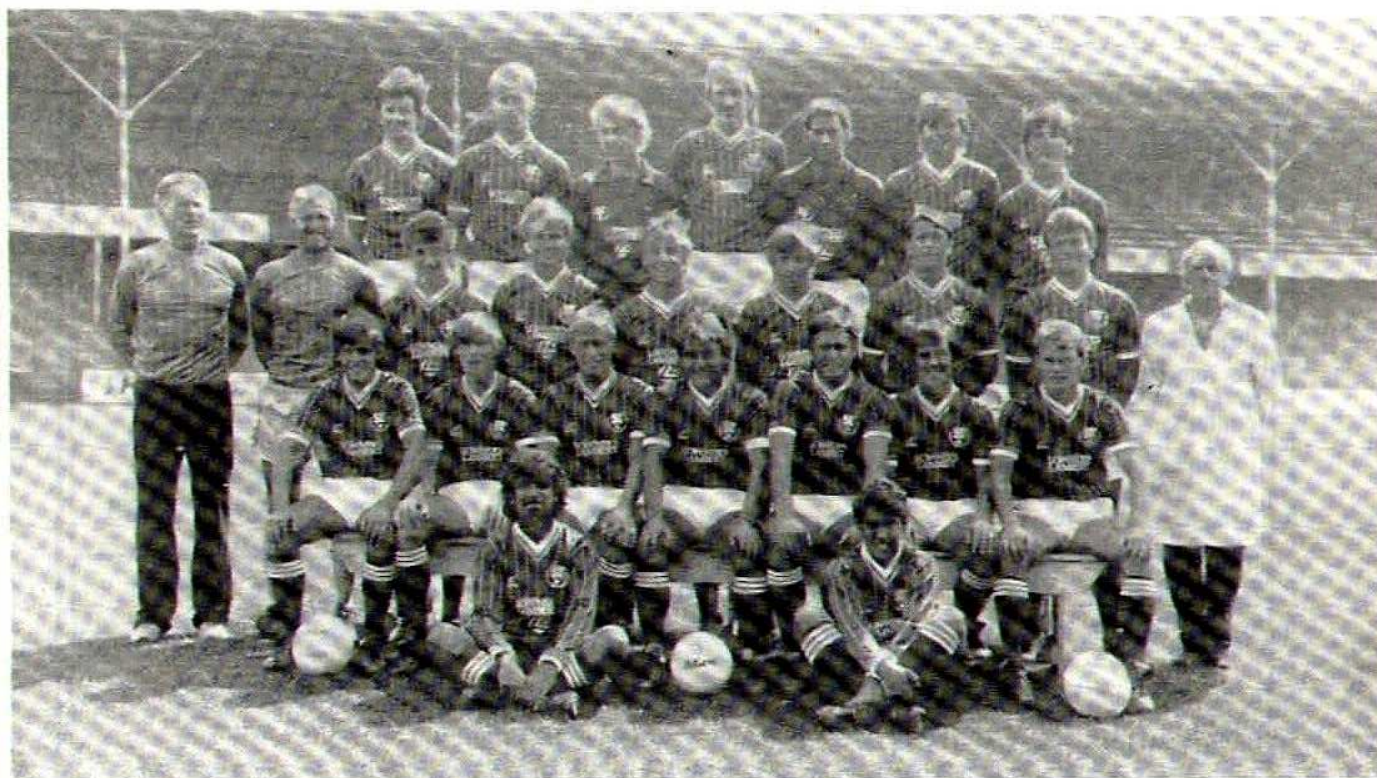
he is their top scorer. One of Dave's goals for Mansfield came on the opening day of the season in their 1-0 win here at Vale Park. Top scorer **ALAN MAYES** the ex-Chelsea and Watford forward is currently injured and misses today's game.

**Our total record against Swindon Town is as follows:**

	P	W	D	L	F	A
HOME	17	11	5	1	37	14
AWAY	18	4	4	10	16	27
	<hr/>					
	35	15	9	11	53	41

The teams have never met in a cup-tie.

## SWINDON TOWN F.C. Season 1984/85



**BACK ROW:** (Left to Right). Charlie Henry, Simon Gibson, Alan Churchward, Nigel Grav. Scott Endersby, Andy Woollen, Mark Hughes. **CENTRE:** (Left to Right). Harry Gregg (Assistant Manager), John Trollope (Youth Team Manager), Jamie Renolds, Mark Gardiner, Martin Davison, Sean Prowse, Mike Graham, Dave Hockaday, Kevin Morris (Physiotherapist), **FRONT ROW:** (Left to Right). Paul Batty, Gary Nelson, Leigh Barnard, Lou Macari (Player Manager), Andy Rowland, Alan Mayed, Colin Bailie. **SEATED:** (Left to Right). Mark Payne, Sheldon Lee.



Flat out...goes Ian Griffiths passing Stockport's Rutter

Photo by courtesy of Neal Simpson

## HAMIL ROAD TILE CENTRE

For Friendly Service, Prompt Delivery and a wide range of Continental and English Wall and Floor Tiles

English Wall Tiles from £3.50 Box (25 tiles)  
Continental Wall Tiles from £5.50 sq. yd.

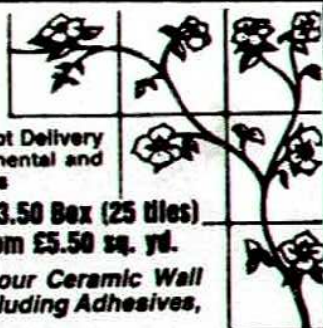
So remember! For all your Ceramic Wall and Floor Tile needs, including Adhesives, contact:

### HAMIL ROAD TILE CENTRE

279 Hamil Road, Burslem, S.O.T.

Telephone 810545

Our own fixing service available



## STOKE BEARINGS LTD

Industrial Division—Stoke-on-Trent 264365  
(After Hours) 25660/519420

Automotive Div. — Stoke-on-Trent 279914  
(After Hours: Dennis Lowndes) 20863

24 hour service by radio controlled vans

Sun Street, Hanley, Stoke-on-Trent

Best Wishes to Port Vale for 84/85

## BERRESFORD MOTORS LTD.

CHEDDLETON, Nr: LEEK.

Tel. S-on-T 550240/550259

Special buses operate for all First Team home games as follows:

Leek Bus Stn.	dep 1.45pm (6.15pm)	Newhouse Road	2.25 (6.55)
Cheddleton (Ave.)	2.00 (6.30)	White Lion	2.30 (7.00)
Cellarhead	2.10 (6.40)	Northwood	2.35 (7.05)
Werrington P.O.	2.15 (6.45)		
Werrington Hotel	2.20 (6.50)		

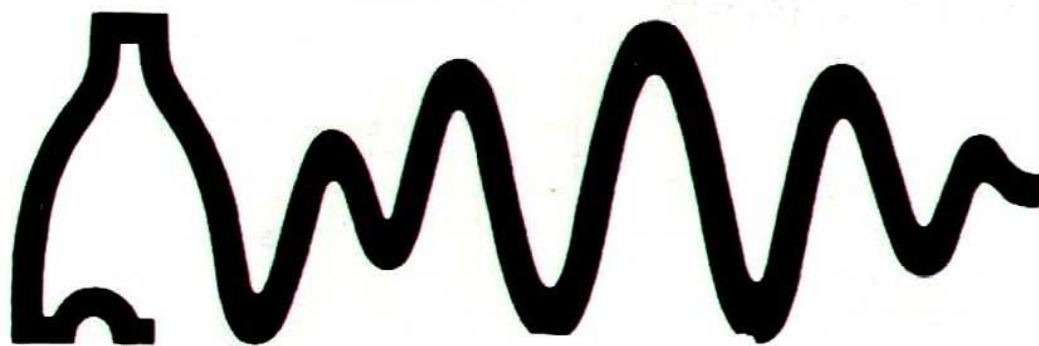
Return after the match.

Tours are also operated to most away matches at low prices - for full details please telephone.



**Up and over....goes Billy Kellock**

*Photo by courtesy of Neal Simpson*



# **BBC Radio Stoke**

*FOR ALL YOUR  
SPORT, NEWS AND ENTERTAINMENT*

**200m/1503kHz/94.6VHF STEREO**  
**for North Staffordshire and South Cheshire**

# LYCETT BROS.

## Blinds and Awnings Ltd.

VISIT OUR 2 FLOORS OF COLOURFUL SHOWROOMS AND SEE OUR WONDERFUL SELECTION OF ROLLER: VENETIAN AND VERTICAL LOUVRE BLINDS, OVER 1,000 PATTERNS AND COLOURWAYS AVAILABLE:

**5% DISCOUNT** to all Port Vale Supporters producing this advert.

**31 Broad St, Hanley. Phone 265176**

**OPEN: Tues.-Sat. 9.30-5.30**

A Message to all Port Vale Supporters

from **MORGAN & Co.**

### **INS. BROKERS LTD.**

Present this advertisement at our office and receive **£5.00 DISCOUNT**

off any **NEW** Motor, Life or Household First Premium

**Stoneyfields, 600 Etruria Road  
NEWCASTLE 618321**

## **Garners**

*of Newcastle*

MERRIAL STREET, NEWCASTLE

Telephone: Newcastle 615389

●  
*Everything for the Garden*

*Specialists in SEEDS for  
LAWN and SPORTS FIELDS*

## **William A. Bratt**

F.Int.I.C.

*INSURANCE CONSULTANT*

*&*

*MORTGAGE BROKER*

*MEMBER I.I.C.*

21-23 Tower Square, Tunstall

STOKE-ON-TRENT

Tel: 0782 89314/5

*For complete protection*

*Private and Commercial*

*B.I.A. Co's only*

*Our integrity is your guarantee*

## **CHRISTMAS AND NEW YEAR SPECIALS**

B & B — Parties Catered For  
Evening Dinner

●  
*The*

## *Shaftesbury Private Hotel*

(Residential Licence)

**Prop: Bob & Jill Crowther**

**26, SHAFTESBURY AVENUE,  
BLACKPOOL Tel. 0253 52453**

*Highly recommended by John Statham,  
Port Vale Promotion Dept.*

### Feb. 20th. Scunthorpe Res. 1 Port Vale Res. 2

Scunthorpe took the lead in the first half when Ian Botham's effort was parried by Karl Austin, the Vale 'keeper who normally plays for Milton United, only for Meadows to sweep the rebound home. Vale equalised early in the second half when a cross from the evergreen Alan Oakes, making his first appearance of the season, was knocked down by Colin Tartt for Derek Monaghan to blast the ball into the net. The Vale defence kept Scunthorpe's chances to a minimum before clinching the points just before the end when Mick Lawson ran clear all on his own before sliding the ball home.

Vale team: Austin, Tartt, Oakes, Jones, Mountford, Cegielski, Vaughan, Lawson, Monaghan, O'Keefe, Sherwin. Sub.: Buckley for Sherwin.

### Feb. 27th. Port Vale Res. 1 Hull City Res. 0

On the half-hour Brendan Hackett drove the ball into the net but the goal was disallowed for offside against Jones. Hull were unbeaten in seven games but could make no headway against the Vale defence in which 'keeper Karl Austin played well despite twisting his ankle. Karl is currently on non-contract terms with the club.

The winning goal arrived with 20 minutes left when Eamonn O'Keefe took a pass from Derek Monaghan and fired home from the edge of the box.

Vale team: Austin, Banks, Cegielski, Tartt, Mountford, Ridley, Jones, Dale, Monaghan, O'Keefe, Hackett, Sub., Sherwin.

### Central League Division Two Fixtures - 1984/85

Aug.	29	Leeds Utd.	H	0-1
Sept.	5	Middlesbrough	A	1-0
	12	Oldham Athletic	H	2-3
	19	Rotherham Utd.	A	1-2
	26	Blackpool	H	2-4
Oct.	3	Doncaster Rovers	A	3-0
	10	Bolton Wanderers	H	2-0
	16	Preston North End	A	2-4
	23	Sunderland	A	1-0
	31	Grimsby Town	H	0-3
Nov.	7	Hull City	A	1-2
	14	Scunthorpe Utd.	H	1-0
	21	Wigan Athletic	H	0-1
	26	Leicester City	A	0-1
Dec.	5	Burnley	H	3-1
	12	York City	A	2-2
	19	Wolverhampton W.	H	3-3
1985				
Jan.	8	Leeds Utd.	A	1-3
	16	Middlesbrough	H	post
	22	Oldham Athletic	A	3-1
	30	Rotherham United	H	post
Feb.	6	Doncaster Rovers	H	1-2
	13	Blackpool	A	post
	20	Scunthorpe United	A	2-1
	27	Hull City	H	1-0
Mar.	6	Grimsby Town	A	
	14	Sunderland	H	
	20	Preston North End	H	
	27	Bolton Wanderers	A	
Apr.	2	Wigan Athletic	A	
	10	Leicester City	H	
	16	Burnley	A	
	22	Wolverhampton W.	A	
May	1	York City	H	

## Kit Sponsorship

Player	Tracksuit	Boots	Shirt	Socks/Shorts
C. Pearce	Port Vale Supporters Club			
R. Earle	Jack Gower and C. H. and V. Abbotts			
R. Bromage	Port Vale Supporters Club			
J. Ridley	Leek & District Travelling Valiants			
P. Sproston	Port Vale Supporters Club			
M. Smith	B. Williams. Little Ash Farm, Ash Bank			
O. Williams	Port Vale Supporters Club			
E. O'Keefe	Port Vale Supporters Club			
C. Tartt	Port Vale Supporters Club			
A. Brown	Port Vale Supporters Club			
Alan Webb	Paul Flynn			
G. Hunter	Jim Flynn			

## TODAY'S MASCOT

Today's MASCOT is **STEVE CARR** who lives at 37 Hillside Road, Cheddleton. He is ten years of age and attends St. Edward's Middle School, Cheddleton.

Apart from being a keen Vale supporter he also plays football himself for Britannia Kings in the Leek Ladsandads League.



# FOURTH FOCUS

The top two in the Division are currently Bury and Blackpool and they are due to meet each other today at Gigg Lane in what should be a cracking game. Last weekend Bury came from behind twice to draw 2-2 at Scunthorpe with goals from Madden and Entwistle cancelling out goals by Graham and Cammack. Blackpool won 1-0 at Northampton with a goal by Stewart taking their recent surge to 10 wins and 2 draws in their last 12 games while in contrast Northampton have slid to the bottom with 5 consecutive defeats. Chesterfield ended Chester's recent good run with a 3-1 victory including 2 goals from former Vale player Bob Newton, the second of which was the 100th league goal of his career. Darlington, who have recently signed Gary Haire from Bradford City for £6,000, defeated Exeter 2-1 with goals from Tupling and Lloyd while Colchester extended their unbeaten run to 10 games with a 0-0 draw at Halifax. Colchester's prolific striker Tony Adcock has had to enter hospital for an exploratory knee operation so it will be interesting to see what effect it has on their promotion bid.

Hereford drew 1-1 at Wrexham through an equaliser by Paul Maddy and have now lost only 1 of their last 12 league games, Tranmere did likewise at Torquay and today's visitors Swindon lost 2-1 at Stockport who followed up their 6-0 win over Aldershot with goals from Kerr and Evans as against one from Hockaday.

In other games inconsistent Crewe won 3-1 at Rochdale with goals from Thomas (2) and Platt with Barry Diamond replying for the 'Dale, Southend defeated Aldershot 1-0 with a goal by Gymer, and Mansfield won 2-0 against Hartlepool, Luke scoring twice.

\*\*\*\*\*

Answer to question on page 2.

Stockport (6-0 v Aldershot) and Aldershot (6-2 v Southend)

\*\*\*\*\*

## FAIRNESS FOR FOOTBALL

We want the Chancellor of the Exchequer to reduce Pool Betting Duty in his Budget on the 19th March. This will mean that Football Clubs would have an extra source of money to make ground improvements, to provide facilities for the local community and to employ promising young players. Write to your M.P. now and support football. Write to: Mr. John Forrester, House of Commons, London SW1A 0AA.

*NEW PARCEL COMPANY OPENING IN THE AREA*

## **EDS OVERNIGHT PARCEL SERVICE**



Unit 2, Newstead Industrial Estate  
Alderflat Drive, Trentham, Stoke-on-Trent  
Telephone: (0782) 643470 Telex: 367473

**BRANCHES THROUGHOUT BRITAIN**



# BOSTOCK'S COACHES

41, 45, 53, 57 Seater  
Luxury Coaches  
Available



FOR TOURS AND TRAVEL TO  
NATIONWIDE AND  
INTERNATIONAL  
DESTINATIONS  
*IN THE GREATEST OF COMFORT*  
SPRAGG STREET GARAGE  
Tel: Congleton (951) 3108

# KEVIN AMPHLETT

INSURANCE CONSULTANTS & MORTGAGE BROKERS

**NEWCASTLE 637711**  
3 KING STREET, NEWCASTLE, STAFFS

## 5% DISCOUNT ON HOUSEHOLD INSURANCE

FOR A LIMITED PERIOD ONLY WE ARE OFFERING 5% DISCOUNT OFF THE STANDARD HOUSEHOLD RATES WITH MOST BRITISH INSURANCE ASSOCIATION COMPANIES. A HOME VALUATION AND ASSESSMENT SERVICE IS AVAILABLE IF REQUIRED.

## UP TO 100% MORTGAGES AVAILABLE

SPECIAL PACKAGE DEALS AVAILABLE FOR FIRST TIME BUYERS INCLUDING LOW-START REPAYMENTS IN THE FIRST YEARS OF THE MORTGAGE

### ALL CLASSES OF INSURANCE

- LIFE & PENSIONS
  - MOTOR
  - COMMERCIAL & INDUSTRIAL
  - SELF EMPLOYED A SPECIALITY
- AT COMPETITIVE RATES

CONTACT US NOW FOR  
PROFESSIONAL QUOTATIONS  
AND FRIENDLY ADVICE



## Best Wishes to P.V.F.C.

# IN COMPLETE HARMONY RIX MANOR and AUSTIN/ROVER

Together we bring you a new era in the Best of British Motor engineering and the finest attention in motoring dealership and servicing



### SALES

Come and view the full range of AUSTIN, MORRIS, ROVER, TRIUMPH cars in our showroom now. Large selection of quality used cars always on display. Demonstrations without obligation. Top part exchange prices given. H.P. Terms arranged.

### SERVICE

Leycare Servicing. Accident Repair Specialists. M.O.T. Testing, Resprays, Vinyl Sunroofs Fitted.

### PARTS DEPT.

Visit our Uniparts shop for the full range of Leyland Spares: Tools, Radios, Cleaning Materials, Number Plates, Accessories, etc.  
*WE LIKE TO SAY YES*



**RIX MANOR LTD**

BROOK LANE, NEWCASTLE. TEL: 618461





# HOW THEY STAND

		LEAGUE DIVISION FOUR (As at 7th March, 1985)							Top League Scorer
Av. Home gate		P	W	L	D	F	A	Pts	
3189	Bury	30	17	7	6	53	33	58	Madden, Entwistle 15
4204	Blackpool	30	17	7	6	45	26	58	Stonehouse 10
3302	Darlington	28	16	9	3	41	24	57	Airey 11
3947	Chesterfield	30	15	10	5	46	29	55	Moss 11
4138	Hereford	28	15	7	5	47	24	55	Phillips 14
2104	Colchester	30	15	8	7	60	45	53	Adcock 24
3637	Peterborough	32	15	7	10	43	35	52	Kelly 11
1620	Tranmere	31	15	3	13	54	46	48	Clayton 20
2135	Crewe Alex	31	14	6	11	45	43	48	Blissett 8
2916	Swindon	31	13	6	12	40	40	45	Mayes 9
2231	Scunthorpe	30	11	10	9	46	39	43	Cowling 9
3446	Port Vale	29	10	10	9	40	37	40	Brown 11
2703	Hartlepool	31	10	10	11	34	40	40	Dixon 7
1980	Southend	32	10	8	14	45	63	38	Phillips 15
2236	Mansfield	28	9	9	10	23	20	36	Caldwell 8
2016	Stockport	28	10	6	12	43	45	36	Kerr 9
2516	Exeter	30	8	9	13	38	50	33	Pratt 16
1489	Halifax	30	9	4	17	26	43	31	Lowe 9
2021	Aldershot	29	8	6	15	35	49	30	Rimmer 5
1405	Chester	28	7	7	14	34	44	28	Diamond 8
2120	Rochdale	29	7	7	15	31	44	28	Foyle 8
1594	Wrexham	29	7	5	17	45	51	26	Steel 11
1288	Torquay	31	5	11	15	26	44	26	Hall 4
2092	Northampton	31	7	2	22	35	61	23	Benjamin 12

IF YOU WANT SPORTS....  
YOU WANT DALES

**DALES**  
**Sports**

**97/99 Stafford Street**  
(Opposite Lewis's)

**Hanley**  
Telephone 22846

## CENTRAL LEAGUE DIVISION TWO

(up to and including 2nd March, 1985)

	P	W	L	D	F	A	Pts
Leicester	23	18	4	1	50	12	58
Hull City	22	13	4	5	45	19	43
Oldham A.	22	11	8	3	50	41	41
Doncaster R.	22	12	5	5	33	26	41
Leeds Utd.	20	10	3	7	41	25	33
Sunderland	21	10	3	8	43	29	33
Wigan A.	19	10	1	8	29	27	31
Port Vale	22	9	2	11	32	34	29
Wolves	22	9	2	11	41	48	29
Middlesbrough	18	8	2	8	48	33	26
Scunthorpe	22	7	5	10	35	42	26
Preston	19	7	4	8	29	28	25
Bolton	21	7	4	10	38	42	25
Blackpool	22	7	4	11	46	69	25
York City	21	6	5	10	33	31	23
Grimsby	21	6	5	10	30	39	23
Burnley	21	4	1	16	24	53	13
Rotherham	21	2	5	14	22	59	11

# TEAMS

Today's Mascot  
is  
STEVE CARR



## Port Vale

Colours: White & Black

CHRIS PEARCE  
ALAN WEBB  
RUSSEL BROMAGE  
GEOFF HUNTER  
PHIL SPROSON  
JOHN RIDLEY  
PETER GRIFFITHS  
ROBBIE EARLE  
ALLY BROWN  
BILLY KELLOCK  
IAN GRIFFITHS

## Swindon Town

Colours: Red and White

1 SCOTT ENDERSBY  
2 CHRIS RAMSEY  
3 COLIN BAILEY  
4 LOU MACARI  
5 NIGEL GRAY  
6 DAVID COLE  
7 DAVID HOCKADAY  
8 ANDY ROWLAND  
9 COLIN GORDON  
10 DAVID CALDWELL  
11 CHARLIE HENRY  
12 PETER COYNE



TODAY'S REFEREE:

**K. S. HACKETT**  
(Sheffield)

LINESMEN:

**J. H. HOPE** (Cheshire)  
*Red Flag*

**P. STOKES** (Staffordshire)  
*Yellow Flag*

Today's *mitre* Delta  
Matchball donated by



**Port Vale  
Supporters  
Club**

## Next at Vale Park

Thursday, 14th March

Central League Div. 2. K.O. 7 p.m.

**PORT VALE RES.  
v. SUNDERLAND RES.**

Saturday, 16th March.

Canon League Div. 4. K.O. 3 p.m.

## Port Vale v. Rochdale

Next week our visitors are Vic Halom's Rochdale team who are currently on the fringe of the bottom four. It gives us another chance of a double as we triumphed 2-1 at Spotland back in October thanks to goals from O'Keefe and Brown.

**Burgess'**  
Pastrycooks &  
Confectioners

Extensive Range of Wedding Cakes  
Full Range of  
Morning and Fresh Cream Cakes daily

BRANCHES IN NEWCASTLE AND  
THE POTTERIES

**F. W. BURGESS & SONS LTD**  
Blackfriars Bakery, Newcastle  
Staffs. ST5 2EA

TELEPHONE: 617824/5/6